

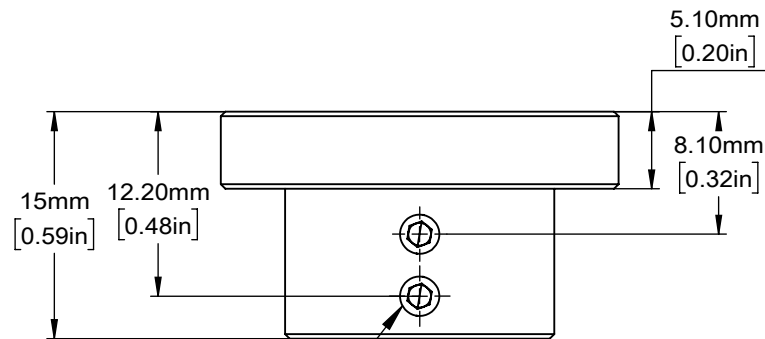
SM1 ( 1.035"-40 )  
EXTERNAL THREADS

Ø 12.1mm [0.476in]  
CLEARANCE HOLE

2 X 1.2mm [0.05in] HOLES

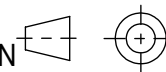
DOUBLE BORE  
PROVIDING 3 POINTS CONTACT  
WITH NYLON-TIPPED SETSCREWS

20.30mm  
[0.80in]



M3x0.5 NYLON-TIPPED  
SECURING SETSCREW  
1.5mm[0.06in] HEX

DRAWING  
PROJECTION



**OMTOOLS**

REV

A0

FZ1SM12

DRAWN

TODD

DATE

2020/7/23

WEIGHT

SCALE

FOR INFORMATION ONLY  
NOT FOR MANUFACTURING PURPOSES

0.01kg

2:1