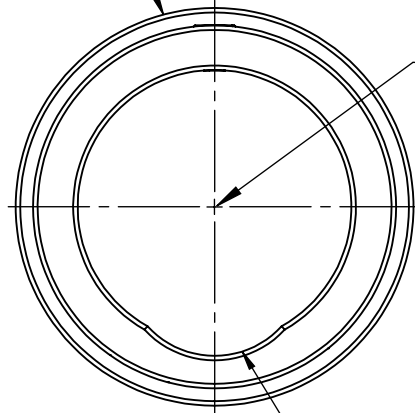
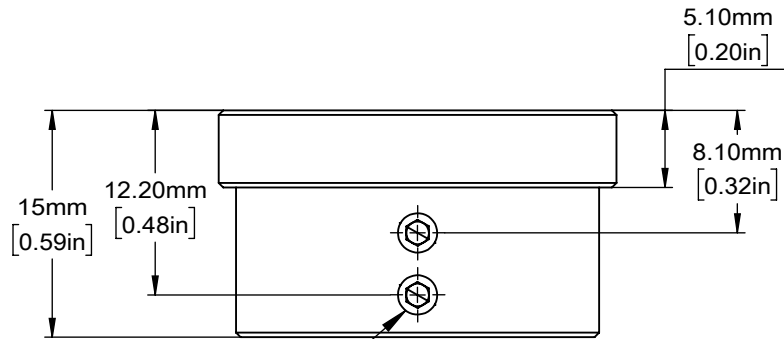


SM1 (1.035"-40)
EXTERNAL THREADS

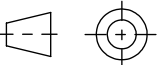
Ø 18.1mm [0.713in]
CLEARANCE HOLE



DOUBLE BORE
PROVIDING 3 POINTS CONTACT
WITH NYLON-TIPPED SETSCREWS



M3x0.5 NYLON-TIPPED
SECURING SETSCREW
1.5mm[0.06in] HEX

DRAWING PROJECTION 		OMTOOLS	
REV	A0		
DRAWN	TODD	WEIGHT	SCALE
DATE	2020/7/24	0.01kg	2:1
FOR INFORMATION ONLY NOT FOR MANUFACTURING PURPOSES			